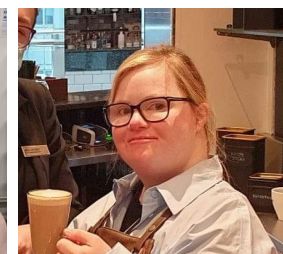
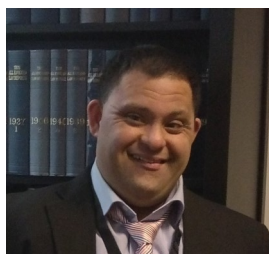


Supporting people who have Down's syndrome to live full and rewarding lives through accessing meaningful employment opportunities.

The Down's Syndrome Association developed the WorkFit programme to support people who have Down's syndrome to fulfil their career ambitions. We believe that everyone who has Down's syndrome can work if they want to and are supported to do so.

WorkFit Officers match candidates who have Down's syndrome with inclusive employers and support both parties at all stages of the process. WorkFit support is on-going for as long as it is needed by the candidate, their family and/or the employer.

Why get a job through WorkFit?



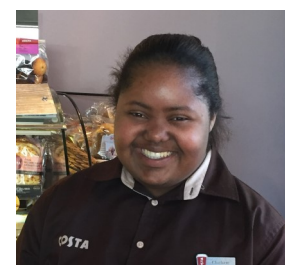
"My job makes me feel good and worthy. It has given me more independence. I like earning some money so that I can go out and buy things. I enjoy speaking to the customers and being part of the team."

James, Hospitality Assistant, South East



"We are so happy that Jack has a job and feels like other adults do when going out to work. Jack was listened to and included throughout the process. He is happy to go to work and looks forward to being paid and able to treat himself."

Parents of Jack, Recycling Operative, North East



Through WorkFit you can:

- ✓ Do work that **interests you and fits your skills and aptitude**
- ✓ Be supported in **professional and personal development** to understand your work options and progress your career
- ✓ Enhance your **confidence and independence** through learning new skills
- ✓ **Meet new people**, build your social networks and really feel part of a team
- ✓ **Earn a wage**, giving you more spending power and choices

Our candidates tell us that they feel happier and healthier since starting their jobs.

Hear what our candidates are saying...

We have many different types of opportunities across different industries so we can help you find something to suit your interests. Hear about our candidates' experiences:



Hetti, Café Assistant at Dunelm



Sam, Distribution Operative at GXO Logistics

 **YouTube** [CLICK HERE to see more short videos from our candidates and employers](#)

How WorkFit will support you...

Our dedicated and knowledgeable team of **WorkFit Officers** support candidates and employers throughout the process.



As a first step, your WorkFit Officer has a discussion with you to **create a Vocational profile**. This records your interests, skills and career ambitions. We can also support you to create your CV.



There are a **range of opportunities you could consider** such as paid work, work experience placements (paid or unpaid), volunteering, supported internships or supported apprenticeships.



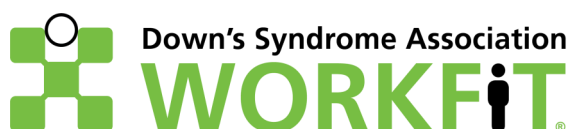
Your WorkFit Officer will work with an employer in your area **to develop and tailor a suitable role for you**. The employer will be provided with a **bespoke training session** and given support and advice on any reasonable adjustments to ensure that they are confident to support you in the role.



Before you start the job, you can go along to meet the **potential employer and work buddies and have a tour of the workplace**. When you start the job the employer will train and support you with advice from your WorkFit Officer. Your work buddy will work beside you to help you learn the tasks and get to know everyone.

[**CLICK HERE**](#)
[**to register today**](#)

**If you are already registered,
we look forward to supporting
you to start work.**



Phone

0333 1212 300

Website



Email



Twitter

